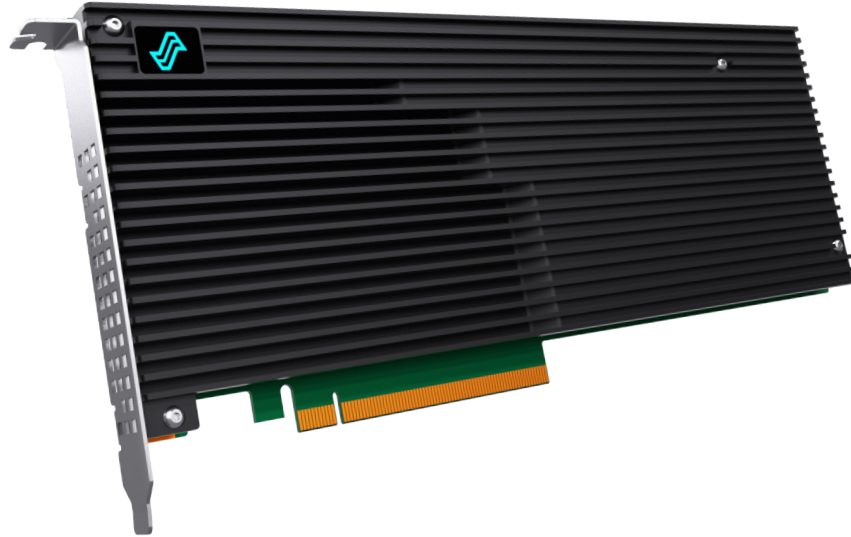




# Liquid LQD4500 IO Accelerator

## Elevate Data Performance



In data-driven environments, unlocking the full potential of data performance is paramount. Introducing the Liquid Element LQD4500 IO Accelerator – an advanced storage solution engineered to shatter performance barriers and redefine what’s possible. Designed to deliver uncompromised data IO performance and responsiveness, the LQD4500 empowers you to accelerate results.

With the capability to deliver an astounding 4 million IOPS of random read performance, coupled with over 26 GB/s of read throughput, it surpasses conventional SSDs, providing the robust foundation your data-intensive applications demand. The ultralow transactional latency of just 10 microseconds ensures that every data interaction occurs at the speed of now.

Storage demands are experiencing exponential growth, and with capacities reaching up to a remarkable 32 terabytes, the LQD4500 equips you to handle vast datasets without compromise. Whether you’re navigating complex simulations, conducting expansive analytics, or managing rich multimedia content, the LQD4500 offers substantial headroom.

- > Ultra Fast PCIe Gen 4.0 x16 Interface
- > Performance of 4 M IOPS and 26 GB/s
- > High-capacity NVMe SSD, up to 32 TB
- > Enterprise-class Power Failure Protection

### Key Features

- Ultra-High Performance
- PCIe 4.0 x16 Interface
- NVMe 1.3 Protocol
- High Capacity, up to 32 TB
- Single Width FHFL
- Plug-n-Play Compatibility
- UEFI Boot Support
- Enterprise Grade Reliability
- Power Loss Data Protection
- Active Thermal Throttling
- Active Power Management
- Advanced ECC and Data Protection
- Advanced Error Recovery
- Active Telemetry Monitoring
- Low Overhead Architecture
- No Host CPU or DRAM Off Load
- Software or OS RAID Supported Data Protection



## Technical Specifications

<b>Model</b>	<b>Liquid LQD4500 IO Accelerator</b>
<b>Raw Capacity</b>	Up to 32TB
<b>NAND Type</b>	TLC 3D NAND
<b>Read Bandwidth</b>	Up to 26GB/s Throughput
<b>Write Bandwidth</b>	Up to 13GB/s Throughput
<b>Random 4K Read IOPS</b>	Up to 4M IOPS
<b>Random 4K Write IOPS</b>	Up to 900K IOPS
<b>Min Read Latency</b>	70µs
<b>Min Write Latency</b>	10µs
<b>Protocol</b>	NVMe 1.3
<b>Bus Interface</b>	PCI Express 4.0 x16
<b>Endurance</b>	Up to 61.53 PBW / 2 DWPD*
<b>Security</b>	256-bit AES Data Encryption
<b>Weight</b>	20 oz
<b>Warranty</b>	3 years or maximum endurance used
<b>Form Factor</b>	FHFL Single Width
<b>Operating Temperature</b>	Op: 0 to 55 deg C / Non-Op: -40 to 75 deg C
<b>Power</b>	Active: 12VDC / ~75W
<b>Airflow</b>	Min 400 LFM
<b>Humidity</b>	5% to 95% (non-condensing)
<b>Altitude</b>	0 ft to 10,000 ft
<b>Operating Systems</b>	Windows, RHEL, SLES, CentOS, Solaris, SUSE, VMware
<b>Agency &amp; Safety</b>	UL, CB, CE, CCS, KCC, HF, JEDEC, CNS, VCCI, FCC Part 15, Subpart B, and CISPR 32 for a Class A device

### Data Center Series

7.68TB: L4500-007T68-040  
15.36TB: L4500-015T36-040  
30.72TB: L4500-030T72-040

### Enterprise Series

6.4TB: L4500-006T40-040  
12.8TB: L4500-012T80-040  
25.6TB: L4500-025T60-040

Please contact your sales rep for more information and to determine which configuration is best to accomplish your company's specific goals. Specification subject to change without notice.

### Contact Information

Liquid Inc.  
11400 Westmoor Circle, Suite 225  
Westminster, CO 80021  
office: +1 303.500.1551  
email: sales@liquid.com

\*PBW/DWPD table per capacity/configuration available upon request